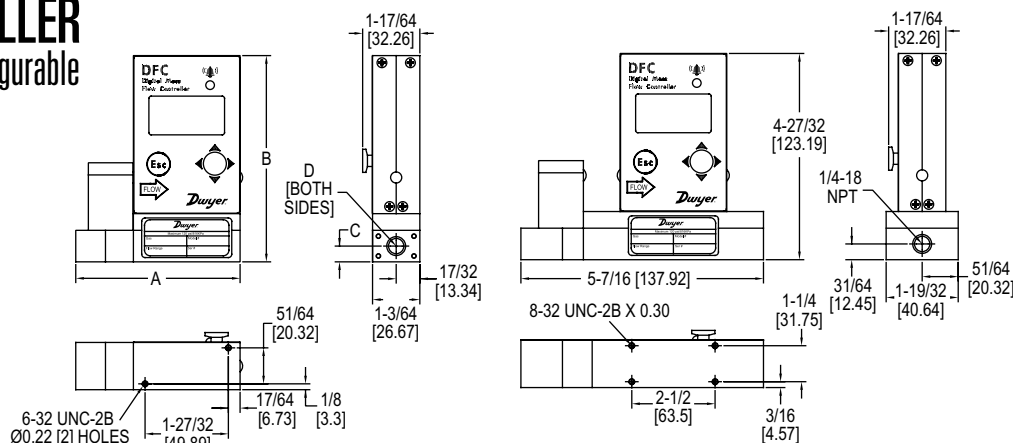


DIGITAL FLOW CONTROLLER

Multi-Parameter, Multi-Gas, Field-Configurable



Ranges 0.5 mL/min-20 L/min (DFC-01/50)

Ranges 21 L/min-100 L/min (DFC-51/56)

Range	A	B	C	D
0.5 mL/min-50 mL/min	3-11/16 [93.47]	4-37/64 [116.33]	11/32 [8.64]	10-32 UNF
51 mL/min-20 L/min	3-21/32 [92.96]	4-13/32 [111.76]	11/32 [8.64]	1/8 NPT

The **Series DFC Digital Flow Controller** combines a straight tube sensor with a restrictor flow element to provide accurate readings and control. Simultaneous displays of mass flow, volumetric flow, pressure and temperature parameters promote applications in a variety of industries.

FEATURES/BENEFITS

- Provides fast response rate (<20 ms)
- Supports up to 90 different user selectable gases and gas mixes
- Provides high accuracy and repeatability
- Self-diagnostics through status LED or OLED indication
- Easy configuration/calibration software

APPLICATIONS

- Gas flow measurement
- Gas flow control
- Operating pumps and valves
- Process equipment
- Vacuum process
- Scientific and analytical
- Bioreactors and surface depositions

SPECIFICATIONS

Service: Clean, non-corrosive gases compatible with wetted parts.
Wetted Materials: 316 SS, 416 SS, high temperature polyamide, alumina ceramic, epoxy, silicone, glass, gold. FKM O-rings.
Accuracy: $\pm(0.5\%$ of reading + 0.2% FS).
Repeatability: $\pm 0.2\%$ FS.
Response Time: 150 ms.
Output: 0-5 VDC, 4-20 mA and 0-10 VDC.
Relay Rating: Programmable solid state relay.
Max. Particulate Size: 20 microns.
Temperature Limits: 14 to 140°F (-10 to 60°C).
Power Supply: 12-26 VDC.
Process Connections: 1/8" compression fitting for flow rates ≤ 10 L/min (-005, -010); 1/4" for ≤ 50 L/min (-050); 3/8" for ≤ 100 L/min (-100).
Pressure Limits: 120 psig (8.27 bar).
Leak Integrity: 1×10^{-9} sccs of helium.
Display: 2 x 16 character OLED.
Weight: DFC-01/50: 1.40 lbs (0.635 kg); DFC-51/56: 1.66 lbs (0.755 kg).
Agency Approvals: CE.

MODEL CHART									
Example	DFC	-22	010	-V	-A	L	A	2	DFC-22010-V-ALA2
Series	DFC								Digital flow controller
Range*		22 26 32 37 39 43 48 56							0 to 100 mL/min 0 to 200 mL/min 0 to 500 mL/min 0 to 1000 mL/min 0 to 2 L/min 0 to 5 L/min 0 to 10 L/min 0 to 100 L/min
Body Size			005 010 050 100						Very low flow Low flow Medium flow High flow
Seal Material				V					Fluoroelastomer
Fittings					A B D				1/8" compression (very low, low) 1/4" compression (medium) 3/8" compression (high)
Display						L			LED display
Output Signal							A		0-5 VDC default (4-20 mA, 0-10 VDC display selectable)
Digital Interface								2 3	RS-232 default (RS-485 display selectable) RS-232 default with Modbus® (RS-485 display selectable), body size 005, 010, 050 RS-232 default with Modbus® (RS-485 display selectable), body size 100
*Consult factory for ranges from 0-0.5 mL/min up to 0-100 L/min.									
⑥ Items are subject to Schedule B discounts.									

ACCESSORIES

Model	Description
GFC-110P	110 V power supply
GFC-220PE	220 V power supply
GFC-CBL1	8 ft (2.4 m) cable with 15-pin connector
GFC-CBL3	3 ft (0.9 m) extension cable for LCD readout