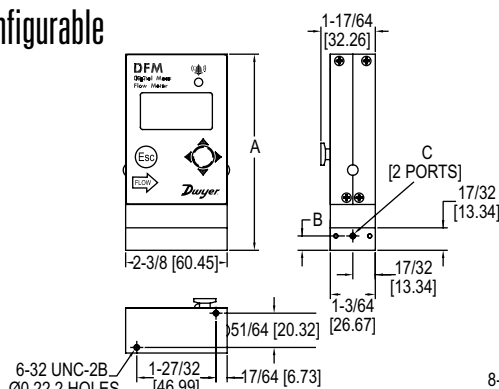
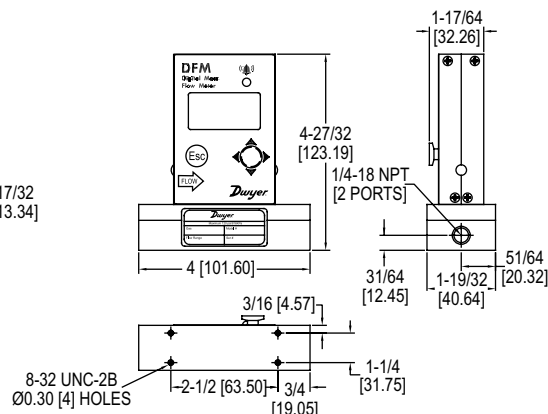


# DIGITAL FLOW METER

## Multi-Parameter, Multi-Gas, Field Configurable


**Ranges 0.5 mL/min-20 L/min (DFM-01/50)**

**Ranges 21 L/min-100 L/min (DFM-51/56)**

Range	A	B	C
0.5 mL/min-50 mL/min	4-13/32 [111.76]	4-37/64 [116.33]	10-32 UNF-2B
51 mL/min-20 L/min	4-37/64 [116.33]	4-13/32 [111.76]	1/8-27 NPT

The **Series DFM Digital Flow Meter** is the industry leader in the measurement of mass and volumetric flow rates of process gases. Using the OLED/joystick interface, the flowmeter can measure up to 30 different gases. Simultaneous displays of mass flow, volumetric flow, pressure and temperature parameters promote applications in a variety of industries.

### FEATURES/BENEFITS

- Quick (< 20ms) response time
- Multi-parameter functionality
- Multi-gas functionality
- Capable of storing up to 90 gases and 20 custom gas mixes
- Field configurable
- Modifiable outputs
- High, low or in-range alarms with preset action delay for mass flow, temperature and pressure

### APPLICATIONS

- Gas flow measurement
- Operating pumps and valves
- Process equipment
- Scientific and analytical
- Bioreactors and surface depositions
- Gas sampling
- General manufacturing

### SPECIFICATIONS

**Service:** Clean, non-corrosive gases compatible with wetted parts.  
**Wetted Materials:** 316 SS, 416 SS, high temperature polyamide, alumina ceramic, epoxy, silicone, glass, gold, FKM O-rings.  
**Accuracy:**  $\pm(0.5\%$  of reading + 0.2% FS).  
**Repeatability:**  $\pm 0.15\%$  FS.  
**Response Time:** 10 ms.  
**Output:** 0-5 VDC, 0-10 VDC and 4-20 mA.  
**Relay Rating:** Programmable solid state relay.  
**Max. Particulate Size:** 20 microns.  
**Temperature Limits:** 14 to 140°F (-10 to 60°C).  
**Power Supply:** 9-26 VDC.  
**Process Connections:** 1/8" compression fitting for flow rates  $\leq 10$  L/min; 1/4" for  $\leq 50$  L/min; 3/8" for  $\leq 100$  L/min.  
**Display:** 2 x 16 character OLED (model selectable).  
**Pressure Limits:** 120 psig (8.27 bar).  
**Leak Integrity:**  $1 \times 10^{-9}$  sccs of helium.  
**Weight:** DFM-01/50: 0.85 lbs (0.4 kg); DFM-51/56: 1.15 lbs (0.52 kg).  
**Agency Approvals:** CE.

### MODEL CHART

Example	DFM	-22	010	-V	-A	L	A	2	DFM-22010-V-ALA2
<b>Series</b>	DFM								Digital flow controller
<b>Range*</b>		22 26 32 37 39 43 48 56							0-100 mL/min 0-200 mL/min 0-500 mL/min 0-1000 mL/min 0-2 L/min 0-5 L/min 0-10 L/min 0-100 L/min
<b>Body Size</b>			005 010 050 100						Very low flow Low flow Medium flow High flow
<b>Seal Material</b>				V					Fluoroelastomer
<b>Fittings</b>					A B D				1/4" compression (low) 1/8" compression (medium) 3/8" compression (high)
<b>Display</b>						L			LED display
<b>Output Signal</b>							A		0-5 VDC default (4-20 mA, 0-10 VDC display selectable)
<b>Digital Interface</b>								2 3	RS-232 default (RS-485 display selectable) RS-232 with Modbus® (RS-485 selectable)

\*Consult factory for ranges up from 0-0.5 mL/min to 0-100 L/min.

### ACCESSORIES

Model	Description
GFM-110P	110 V power supply
GFM-220PE	220 V power supply
GFM-CBL4	8 ft (2.4 m) cable with 15-pin connector
GFM-CBL5	3 ft (0.9 m) extension cable for LCD readout